

NEWSNOTE

FROM THE PRINCIPAL’S DESK...

Dear SME Families,

With just one final week before Easter Break, I wanted to share some odds and ends information about various topics:

Congrats and a huge kudos to all who participated in our first session of **Running Club**. Students and parents gathered yesterday for either a one mile walk/run or a 5K walk/run. Participants seemed eager for warmer, spring-like weather to return to Western New York! Many thanks to **Mrs. Marrano** for moderating the club and sparking interest in this new extracurricular club.

Another sign of the season: the return of **Garden Club**! Due to the popularity of this club, we have divided the students into different groups: **Students in K-2 will meet on Wednesdays; Students in 3-8 will meet on Fridays up until the week of Memorial Day**. Garden Club’s final meeting is May 21st. Thanks so much to **Mrs. Guenther and Mrs. Koszuta** for moderating this extracurricular club and growing student interest and involvement.

The whole world’s a stage - and SME has one, too! **Mr. Kerns** held his first after-school musical practice yesterday, and the students left with a hard copy of the practice schedule. We’re anxiously awaiting curtains up! - **May 16th and 17th** - for SME’s interpretation of *The Aristocats*.

Friday is a **Christian Witness Mass**, Congratulations in advance to the students and teachers who exemplified virtue or **mercy** - caring for those who suffer. When thinking of mercy, I am reminded of St. Thomas Aquinas’s thoughts he wrote in his *Summa Theologiae*, of the compassion in our hearts for another person’s misery, a compassion which drives us to do what we can to help. Thank you to our SME role models who help demonstrate to us how to live our lives in service of others.

If you missed the Fowler’s Easter Candy Sale, you may consider purchasing Fowler’s gift cards through our **Raise Right program**. Fowlers offers a very generous tuition rebate for gift cards bought through SME - 40%. For example, if you were to purchase \$100 of Fowler’s gift cards, you would receive the cards to use at the local brick and mortar store. You would also receive \$40 (40% of the \$100 purchase) off of your tuition account! This is just one example of how the Raise Right program works to help save our families money on their tuition account.

Have a wonderful week,
Mr. O



- **Fri. 4/4** - Christian Witness Mass @ 8:30am
- **Tues. 4/8** - NYS ELA Testing
- **Wed. 4/9** - NYS ELA Testing
- **Mon. 4/14 - 4/21:** Easter Recess NO SCHOOL
- **Thurs. 5/1** - ART Show, Battle of the Books & Book Fair, 6pm-8pm
- **Fri. 5/2** - Christian Witness Mass, 8:30am
- **Tues. 5/6** - NYS Science Testing
- **Fri. 5/9** - May Crowning Mass, 8:30am & Penny Fair
- **Tues. 5/13** - NYS Math Testing
- **Wed 5/14** - NYS Math Testing
- **Fri. 5/16** - Hope Ribbon Mass, 8:30am
- **Mon. 5/19** - SREAM/ EXCEL Walk-a-Thon
- **Fri. 5/23** - No School
- **Mon. 5/26** - No School

NURSE’S MESSAGE

Attention 5th and 6th grade parents.

Coming home this week is a notice of vaccinations required for your students that will be needed by the first day of school for the 25-26 school year. Students who will be entering 6th grade will need a Tdap vaccine and those entering 7th grade will need a meningitis vaccine. Please note; you will only receive notice if your child has not had the required vaccination at this time, or if there isn't one on file in the HO.

For students who will not be 11 years old at the start of the school year, I have written the date your student will need the vaccination on the top of the sheet. I like to send out these notices early as I understand many students have physicals in the spring and summer and want to make you aware of the requirements prior to appointments. Thank you all for your continued support and understanding of the NYS immunization requirements.



STREAM FLOWER SALE

Our annual STREAM Flower Sale begins this week! You’ll be able to view, place and pay for your order via Cheddar Up! Please keep an eye on your inbox for an email with all the details! A variety of flowers will be available in 4.5” pots with a buy 5 get 1 free deal. There are also hanging baskets available. NEW this year: Patio Tomatoes! Delivery will be Thursday, May 8th at the Parish Center Doors.



HSA

Upcoming HSA Meeting

Interested in learning more about HSA and the events we have planned for this spring? Join us for a meeting tonight (4/2) from 5:30-6:30pm in the Gathering Room (the conference room near the Parish Center). We will be discussing the Book Fair, Teacher Appreciation Week, Penny Fair, and more!

Please use the following link or call-in number if you would prefer to join us virtually:
Video call link: <https://meet.google.com/gip-ogve-oyk>
Or dial: (US) +1 626-804-1999 PIN: 603 115 437#

Spring HSA Events - Save the Dates!

Spring Book Fair: 5/1 & 5/2
HSA Meeting: 5/7
Penny Fair: 5/9
Mega Raffle: 6/6
School Picnic: 6/13

SME Parent Wear

Show your SME pride with SME Parent t-shirts. Each T-shirt is \$10. Adult sizes small through 2XL available. Sizes are limited to available inventory. Order using the following link: <https://sme-parent-wear.cheddarup.com>

SME Spirit Wear

Need SME Spirit Wear? We’ve got you covered! Each t-shirt is \$15, youth and adult sizes are available. Scan the QR code to order.



INSIDE THIS ISSUE:

PRINCIPAL’S DESK	1
FLOWER SALE	1
NURSE’S MESSAGE	1
UPCOMING EVENTS	1
HSA	1
RAISE RIGHT	2
LAST CALL FOR TRACK	2
DROP-OFF/PICK-UP	2
NO AFTER SCHOOL	2
SPIRIT WEAR	2
MEGA RAFFLE	2
SCHOOL PLAY	2
BATTLE OF THE BOOKS	2



ST. MARY'S
ELEMENTARY SCHOOL

2 St. Mary's Hill
Lancaster, NY 14086

Phone: 716-683-2112
Fax: 716-683-2134
www.smeschool.com



UPON THIS HILL,
WE DO GOD'S WILL



SPIRIT WEAR

Please use the link below to complete your purchase:

<https://sme-spirit-wear.cheddarup.com>

Once the payment is received, I will send the shirts home with your student or contact you to arrange pick up later this week/early next week.

Lancaster Youth Bureau Trivia Night



Our student and teacher teams knocked it out of the park at trivia night.

Thank you for participating and representing SME!

MEGA RAFFLE

What would you do with \$35,000??

Buy your Mega ticket for your chance to find out!

When: June 6, 2025 at 7:00PM

Where: St. Mary's High School

The top prize is \$35,000 with 13 other prizes to win.

Cost: \$100.00 a ticket which includes two guests.

Purchase tickets at the link below!

<https://mega-raffle-2025.cheddarup.com>



UNIFORM ORDERS

Uniforms will be available for ordering on a monthly basis! All orders placed within the month-long period will be processed by All-Stars.

Please click the link below to place your order :)

<https://all-stars.printavo.com/merch/stmary-smonthly>



SCHOOL PLAY - *THE ARISTOCATS*

Join us for an unforgettable experience at our school play on **May 16th and 17th!**
Stay tuned for more details on the exciting performances that await!

DROP-OFF AND PICK-UP REMINDERS

To ensure the safety and well-being of all students, we kindly ask that parents remain in the foyer during late drop-offs and early pickups. A member of our school staff will be there to assist you and escort your child to and from the designated areas.

For our Pre-K students, please remember to use either Door 5 (Pre-K 4) or Door 6 (Pre-K 3) for drop-off and pick-up. Please let your child's teacher know if you will be late and which door you will be dropping off/picking up at so that they or another staff member can bring the student to their classroom.

We appreciate your cooperation in this matter, as it helps us maintain a secure environment for our students. If you have any questions or concerns, please feel free to contact us.

NO AFTER SCHOOL

Due to staffing shortages and our Spring Open House, there will be no after school care available on **Thursday May 1st** and **Friday May 2nd.**

We apologize for any inconvenience.



BATTLE OF THE BOOKS

We are bringing back the Battle of the Books event that the school used to hold yearly! BATTLE OF THE BOOKS is a game show-like competition to test student teams' knowledge of two selected books by answering questions. Not all students are required to participate. There are three Battle of the Books divisions - grades 2/3, grades 4/5 and grades 6-8. Teams can have one to five members. The team's members can be from different grades within the division. The team members can each read both books or one reads one while the other reads the other book. Teams should be creative with names, T-shirts, posters etc...

Here are the books per grade division

- Grades 2/3 will read "Magic Treehouse: Buffalo Before Breakfast" by Mary Pope Osborne & "How to eat Fried Worms" by Thomas Rockwell
- Grades 4/5 will read "The BFG" by Roald Dahl & "Mr. Popper's Penguins" by Florence and Richard Atwater
- Grades 6-8 will read "Holes" by Louis Sachar & "The Boy in the Striped Pajamas" by John Boyne

This event will take place in the evening at our Spring Open House on **May 1st** with our Art Show and Book Fair.



LAST CALL FOR TRACK

Don't miss your chance to join the track team!

This is the last week students will be able to sign up.

If your student is interested in signing up please email:

athletics@smeschool.com

There is no need to email if you signed up via the interest form.

RAISE RIGHT

Updated Office Hours:

Monday 12p-2:15p
Tuesday 9a-12p
Wednesday 12p-2:15p

All online and school orders will be checked on Fridays and go home on Monday if inventory allows.

If you have any questions, please email raiserright@smeschool.com.

Our team is here for you!

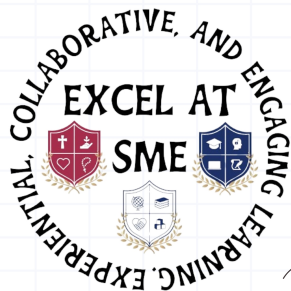


JOIN US FOR THE
ST. MARY'S
ELEMENTARY SCHOOL

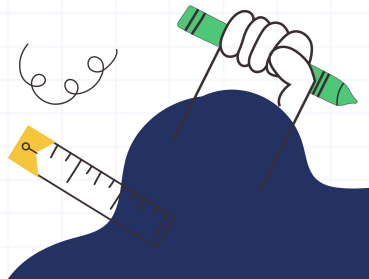
Current and new families are invited to join us for our own SME Art Show, our Battle of the Books competition, and our semi-annual Book Fair.

SPRING
OPEN
HOUSE

THURSDAY, MAY 1
6:00 - 8:00 PM



FOOD TRUCKS
ON SITE & LIGHT
REFRESHMENTS
AVAILABLE.





Our Spring STREAM Flower Sale is here! Thank you for helping us reach our fundraising goal, with the proceeds used to offset the cost of STREAM supplies for our SME students.

We are offering a selection of hanging flower baskets*, patio tomatoes, and a multitude of 4.5 inch potted plants* provided by Mitchell Greenhouses.

*Photos are for reference only, colors vary and you will choose your favorites at pickup.

SPECIAL: Buy 5 pots, get one free! Mix and match any of the 4 1/2 inch pots
Make sure you include the free plant(s) in your order and adjust pricing accordingly.
Hanging baskets are not included in the buy 5 get one free promotion.

Orders and payment due: Wednesday, April 30th.

Pick-Up: St. Mary's Parish Center Thursday, May 8th from 1:00 p.m. - 5:30 p.m.

Please make checks payable to St. Mary's Elementary School with a note of "flower sale."
Check and cash payments must be received by Wednesday, April 30th and may be dropped
of or mailed to:

St. Mary's Elementary School
2 St. Mary's Hill
Lancaster, NY 14086



For questions/concerns, please contact our STREAM Coordinator, Ms. Zaidel at zaidelj@smeschool.com

If you prefer to order online, please check out:

<https://spring-flower-and-plant-sale-87531.cheddarup.com>

Purchaser Information:

Full Name: _____

Email Address: _____

Phone Number: _____

Do you have a student at SME? ☐ YES ☐ NO

If yes, student's name/grade level: _____

How are you affiliated with SME? _____

10 inch Hanging Baskets:

\$25 each

Patio Tomatoes:

\$10 each

<div>10” Combination Hanging Basket</div> <div>3 or 4 different varieties in each basket create very interesting color and texture. Multiple different colors and plant combinations for sun or shade.</div>	<div>1-Gallon Pot Patio Tomatoes</div> <div>Tomato plant planted in a 19 cm, 1-Gallon pot. Produces tomatoes a little larger than grape tomatoes.</div>
--	--

4.5 Inch Potted Plants: \$7 each

Buy 5 Get One FREE

<div>Gerbera Daisies</div> <div>Numerous color and flower styles in the Festival, Jaguar, and Revolution series. Solid dark-eyed and light-eyed blooms. Grow and flower best in full sun with adequate moisture.</div>	<div>Cuphea</div> <div>Commonly known as Mexican Heather. Will grow to a 24” shrub in full sun. Attracts hummingbirds. Loves summer heat. Colors include lavender, white, magenta, purple, and red.</div>	<div>Double Impatiens</div> <div>Fiesta double impatiens. Numerous large rose-like blooms that bloom all season long. Heat tolerant. Filtered sun to part shade. Multiple colors available</div>
<div>Dahlietta</div> <div>Vegetatively propagated dahlias have 2 1/2"-3" fully double flowers. Very uniform in growth habit and numerous flowers. Performs best in full sun. Red, orange, salmon, pink, scarlet, burgundy, white, yellow, and bi-colors</div>	<div>Coleus</div> <div>Kong coleus. Unusual and attractive colors with great texture. Great in landscape, a good replacement for impatiens. Many unusual cutting varieties available. Upright and trailing varieties for shade areas.</div>	<div>Osteospermum</div> <div>Sunscape Daisy. Cold hardy plant that will tolerate spring and fall frost. They make outstanding full-sun garden or patio plants. Keep evenly moist. Beautiful purple, white, pink, rose, coral, or yellow daisy flowers</div>
<div>Petunias</div> <div>Proven garden performers give color all season. Unique flower colors and patterns. Do best in high light, like lots of food and moisture. Excellent in combinations and solid plantings.</div>	<div>Angelonia</div> <div>Well suited for the hot, dry spot in your garden. Blue, coral, red, and white colors.</div>	<div>Verbena</div> <div>Large flowers in an assortment of vibrant colors. Attracts butterflies.Full sun.</div>

ORDER FORM

Hanging Baskets:		Tomatoes:	
	10” Combination Hanging Basket		Patio Tomatoes
No. ordered		No. ordered	

4.5” Potted Plants:

Buy 5, Get 1 Free ☐ YES ☐ NO

	Gerbera	Cuphea	Double Im.	Dahlietta	Coleus	Osteos.	Petunias	Angelonia	Verbena
No. ordered									

Total Cost of Hanging Baskets	Total Cost of Tomatoes	Total Cost of Potted Plants		Order Total
\$	\$	\$		\$

Afterschool News

This Month In After School

Happy April! Due to most of our staff being unavailable on May 1st and 2nd, we will not have after-school care on those days. Other than that, we are all looking forward to Easter break and the themed crafts we have planned leading up to it! Also, please make sure that when you come to pick up your kid, they have everything they came to school with and leave nothing behind! We have had lots of sweaters, coats, and other important items left behind that often go unclaimed, so please take the extra minute to double-check!



!PSA! If you have any craft supplies that you may not be using at home, we will gladly take them off your hands! We will appreciate anything you have to offer that can help us come up with more crafts for the kids to do while they are with us.



UPCOMING

April 4th: Living Stations of the Cross @7pm

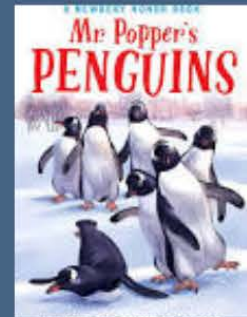
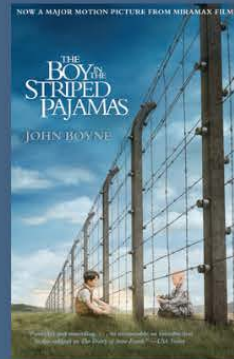
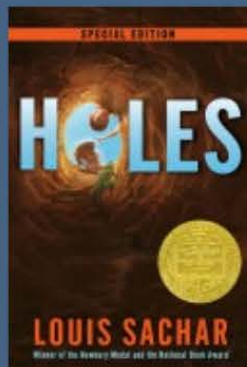
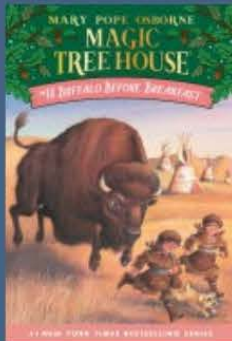
April 14th - 18th: Easter Break!

April 21st - No School/Easter Monday

May 1st and 2nd - No Afterschool care



BATTLE OF THE BOOKS



IF YOU THINK
YOU HAVE
WHAT IT
TAKES TO BE
2025 BOOK
CHAMPION,
SIGN UP
OUTSIDE THE
SCHOOL
LIBRARY BY
MARCH 14TH

2
0
2
5

OUR EVENT
WILL TAKE
PLACE MAY 1ST
AT THE ART
SHOW



ST. MARY
OF THE
ASSUMPTION

175th Anniversary

Dinner & Dancing with
Music by "The RJ's"

April 25, 2025

6:00 PM to 10:00 PM

Joseph's Country Manor and Grove

275 Columbia Ave. Depew, NY

Donation \$75.00 per person

Includes Beer, Wine, Soda-Cash Bar available



Order
Online

Thank you for your Generous Support!

Please return the portion below with payment to purchase your ticket (s). Thank you!

Total # of Tickets -----

Please select dinner choice for each ticket:

Filet Mignon ----- Chicken Piccata ----- Mixed Vegetables -----

How you would like to receive your tickets?

Rectory Pick Up _____ Mail _____

Name: -----

Address: -----

Phone Number: -----

Drop off or mail to St. Mary of the Assumption | St. Mary's Hill Lancaster, NY 14086

ST. MARY'S ELEMENTARY SCHOOL, LANCASTER, NY- "...visible examples of Gospel living."

April
2025

Student lunches are \$3.75, and adult lunches are \$5.50. During this time, we ask that all lunches be prepaid with either cash or check made out to SME, in the exact amount. Any overage will be kept on account. All lunches are comprised of five components; protein, whole grain, vegetables, fruit & milk. In addition to the main entrée, there are three alternate choices offered daily; Turkey Sandwich, Yogurt Parfait, or Sun Butter/Jelly Sandwich. Milk is \$0.50, and may be prepaid if your student buys milk regularly. **Snack will now be served to all grades during lunchtime. No snack is ever purchased on account. Snack money must be presented at point of sale. Snacks are \$0.50-\$1.00.** If you have any questions, please feel free to contact us at heerdt@smeschool.com. We appreciate your support. Liz Heerdt & Tracy Hadsall (menu subject to change)

MONDAY	TUESDAY	WEDNESDAY	THURSDAY	FRIDAY
1 Lunch = \$3.75 2 Lunches = \$7.50 3 Lunches = \$11.25 4 Lunches = \$15.00 5 Lunches = \$18.75	6 Lunches = \$22.50 7 Lunches = \$26.25 8 Lunches = \$30.00 9 Lunches = \$33.75 10 Lunches = \$37.50	11 Lunches = \$41.25 12 Lunches = \$45.00 13 Lunches = \$48.75 14 Lunches = \$52.50 15 Lunches = \$56.25	16 Lunches = \$60.00 17 Lunches = \$63.75 18 Lunches = \$67.50 19 Lunches = \$71.25 20 Lunches = \$75.00	21 Lunches = \$78.75 22 Lunches = \$82.50 Cash or Check to SME Change Will Go On Acct
	1 Beef Crumble Over Mashed Potatoes Veggies, Fruit & Milk	2 Homemade Mac & Cheese Veggies, Fruit & Milk	3 Sloppy Joes Veggies, Fruit & Milk	4 Cheese Pizza Veggies, Fruit & Milk No option B today
7 Popcorn Chicken Veggies, Fruit & Milk	8 Taco Pizza Veggies, Fruit & Milk	9 Meatloaf Veggies, Fruit & Milk	10 Chicken Caesar Salad Veggies, Fruit & Milk	11 Cheese Pizza Veggies, Fruit & Milk No option B today
14 ----- 	15 ----- EASTER B	16 REAK----- NO	17 SCHOOL----- -	18 -----
21 NO SCHOOL	22 Chicken & Cheese Quesadilla Veggies, Fruit & Milk	23 Hot Dogs Veggies, Fruit & Milk	24 Pasta W/Meat Sauce Veggies, Fruit & Milk	25 Pizza Veggies, Fruit & Milk
28 Pancakes & Egg Patty Veggies, Fruit & Milk	29 Beef Taco Bowl Veggies, Fruit & Milk	30 Chicken & Gravy over Mashed Potatoes Veggies, Fruit & Milk		